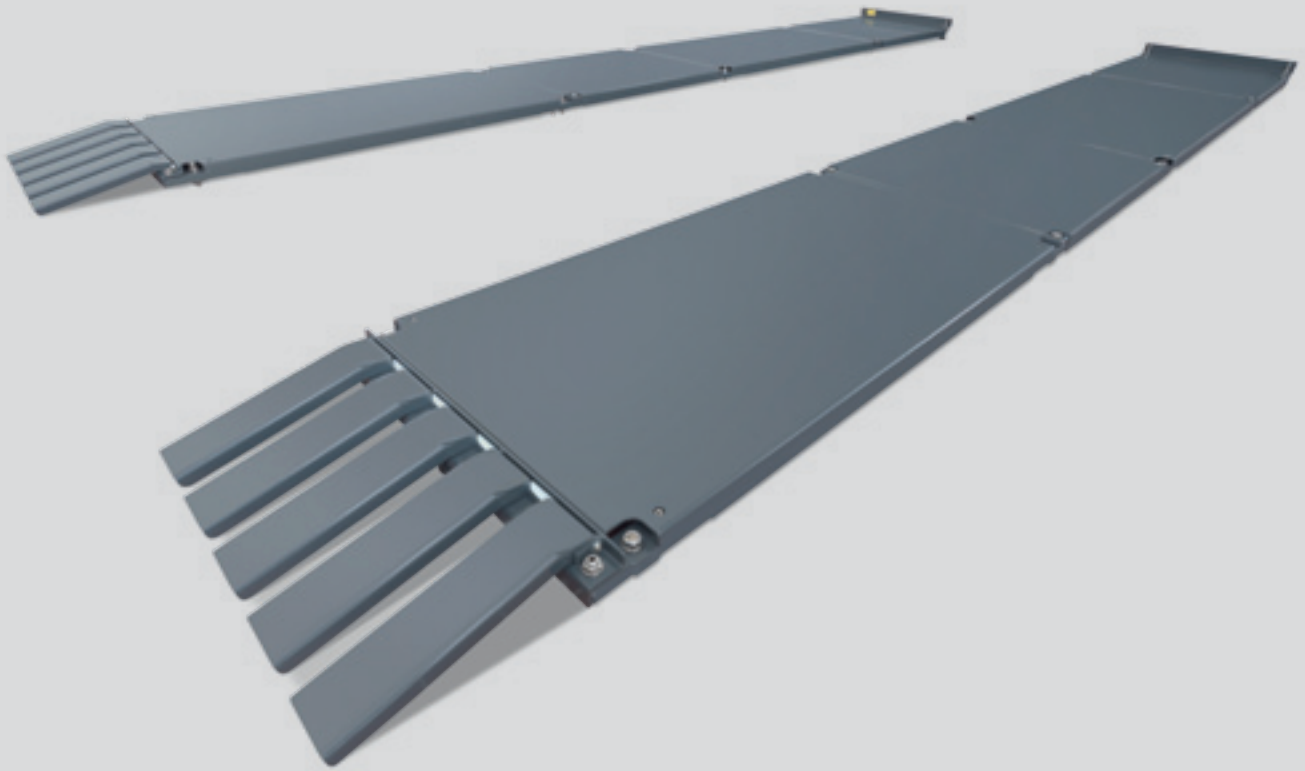


# LTB 100: Levelable test bay



- Complying with German directive and OE specifications
- Safe base for accurate measurements
- 0 to 40 mm height compensation

# Headlight test bay complying with German directive and OE specifications



## Since January 2015, the new general-inspection headlight-testing directive applies to workshops in Germany:

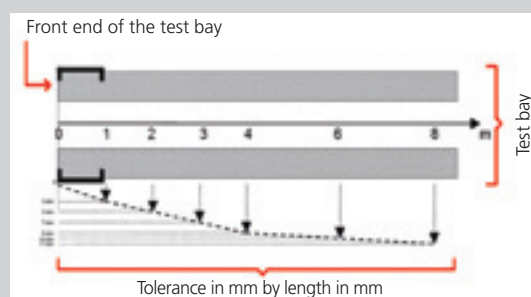
- A permanently fixed and marked headlight test bay is prescribed by law
- The test system described by the directive is defined by the test bay and by the headlight tester
- All test bays have to be leveled
- Every two years, the systems are checked by an expert
- Systems in operation have the right of continuance until December 2016

## Clearly defined tolerances and dimensions:

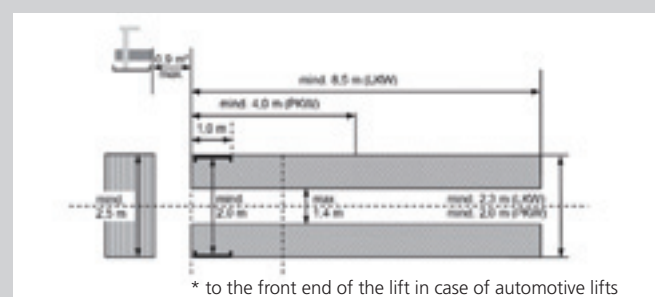
- The areas must not exceed the maximum allowed inclination of 1.5 % and must be aligned.
- The headlight-tester set-up area must not exceed the max. unevenness of  $\pm 1$  mm on a 1-meter distance.
- The allowed unevenness of the tracks depends on the length of the test bay (see graphic).

## LTB 100: Safe base for accurate measurements

Workshop floors often feature a significant slope and unevenness. The LTB 100 levelable test bay meets all requirements the German general-inspection headlight-testing directive on rider 4, § 29 StVZO places on the test bay.



Allowed unevenness of the tracks



Prescribed minimum dimensions in accordance with rider 4, § 29 StVZO – German general-inspection headlight-testing directive

# Beissbarth LTB 100: Levelable test bay



Installation as test lane or drive-through solution (optional)



LTB 100: Patented design for the 0 to 40 mm height adjustment for axle loads of up to 2.5 t



LTB 100: Pit drive-in protection for safe use on workshop pits (optional)

## LTB 100 at a glance:

- Suitable for subsequent installation onto the workshop floor (min. installation height: 54 mm)
- Suitable for installation onto workshop pits (in combination with the optional pit drive-in protection)
- Modular construction (4m, optionally extendable to 6m)
- Extendable for drive-through solution (optional)
- Compensation and fine adjustment by means of 4 wheel set-up elements (4-meter version)
- Maximum allowed axle load: 2.5 t
- Test-system length above ground: 4,269 mm (4 m version incl. drive-on ramps)
- Adjustable height compensation: 0 to 40 mm

## Scope of delivery

LTB 100 (4 m)\*

Extension 2 m

## Order number

1 692 100 030

1 692 100 031

## Special accessories

Set of drive-on ramps

Pit drive-in protection (4 m)

Pit drive-in protection extension (2 m)

1 692 100 032

1 692 100 033

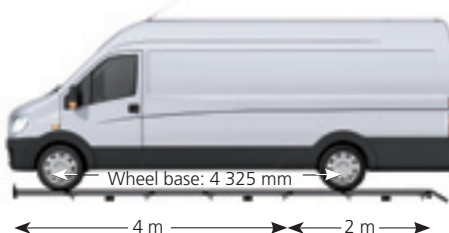
1 692 100 037

## Service/assembly accessories

Service kit (assembly pattern; supporting pliers)\*\* 1 692 100 034

\* Screw anchors for the assembly are not included.

\*\* Accessories can be reused for additional LTB units.



LTB 100: Extension to 6 m (optional)

## General prerequisites concerning the properties of the foundation and the ground:

Max. difference in height on 4 m/6 m: 0 – 40 mm

The ground must comply with Eurocode 2, DIN EN 1992

- Concrete quality: at least C20/25
- Please note the manufacturer specifications

# HTD 815 headlight tester

## Digital headlight testing and adjustment



- TÜV-certified (prototype technical release)
- Cross and alignment laser for precise positioning
- CMOS camera for real-time image processing
- Integrated printer
- All types of lamps (xenon, bi-xenon, LED, bi-LED, halogen)
- Measured values: Horizontal and vertical deviation (pitch angle), intensity, roll angle, yaw angle
- Digital precision: +/-1cm on a 10-meter measuring distance
- Test results displayed in real time
- Digital LCD color screen (5,7") with 262,000 colors
- Touch-screen function (operation with gloves is possible)
- Operating panel can be rotated by 180° for different areas of application (e.g. at TÜV inspections or for the adjustment at the workshop)
- High-quality optics with big, scratch-proof glass lens (Ø 230 mm)
- Levelable 3-wheel trolley
- Lightweight design thanks to the finite element method (FEM)

### Optional accessories:

- Levelable rail system for above and in-ground installation (3m)
- Height-measuring sensor shows the headlight installation height on the display
- Visualization on the workshop computer via Bluetooth® and a new user interface (GUI)

\*The Beissbarth MLD 815 is certified in accordance with the German Road Traffic Type-Approval Law by German TÜV for the test of headlight testers (§ 50 StVZO paragraph 5; Certificate nr. TPN 100 10 1 161).

It complies with § 29 StVZO of German general inspection (HU) headlight-test directive.

Local distributor:

Beissbarth GmbH  
A Bosch Group Company  
Hanauer Strasse 101  
80993 Muenchen (Munich, Bavaria)  
Germany

Tel. +49-89-149 01-0  
Fax +49-89-149 01-240

www.beissbarth.com  
sales@beissbarth.com

Subject to technical modification and changes to scope of delivery. Pictures may sometimes show special accessories or similar versions. Please contact your Beissbarth dealer for a binding up-to-date quotation.

